

FRONT DRIVE HOME

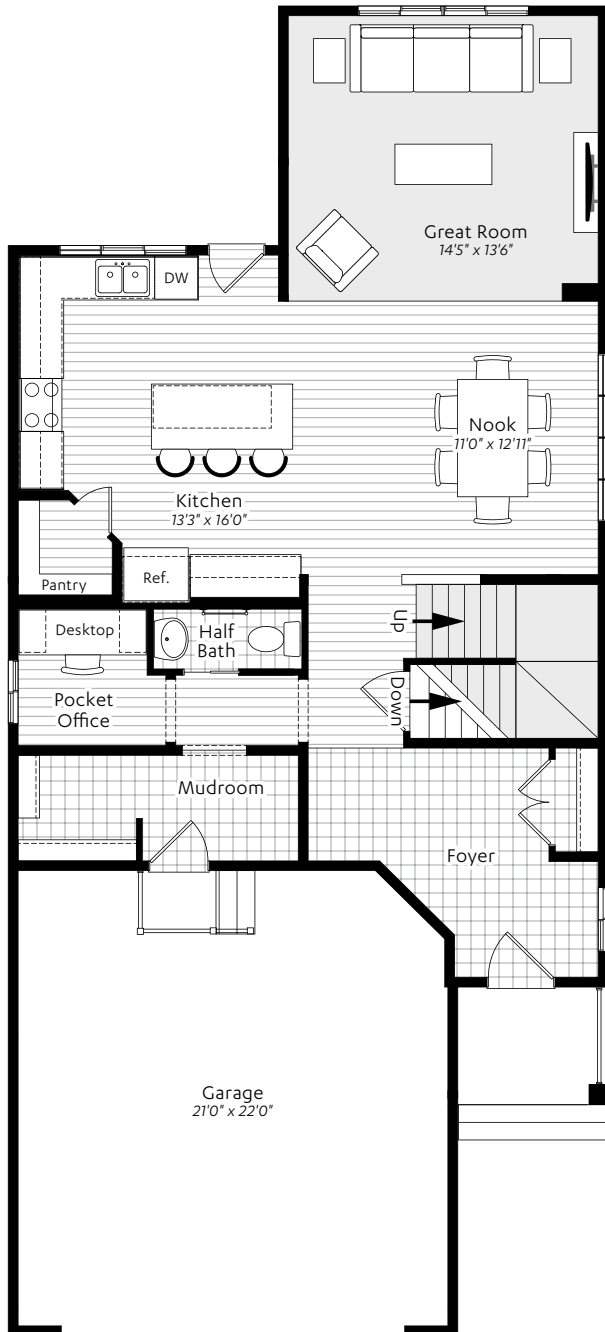
CHARLESTON

IN MAHOGANY

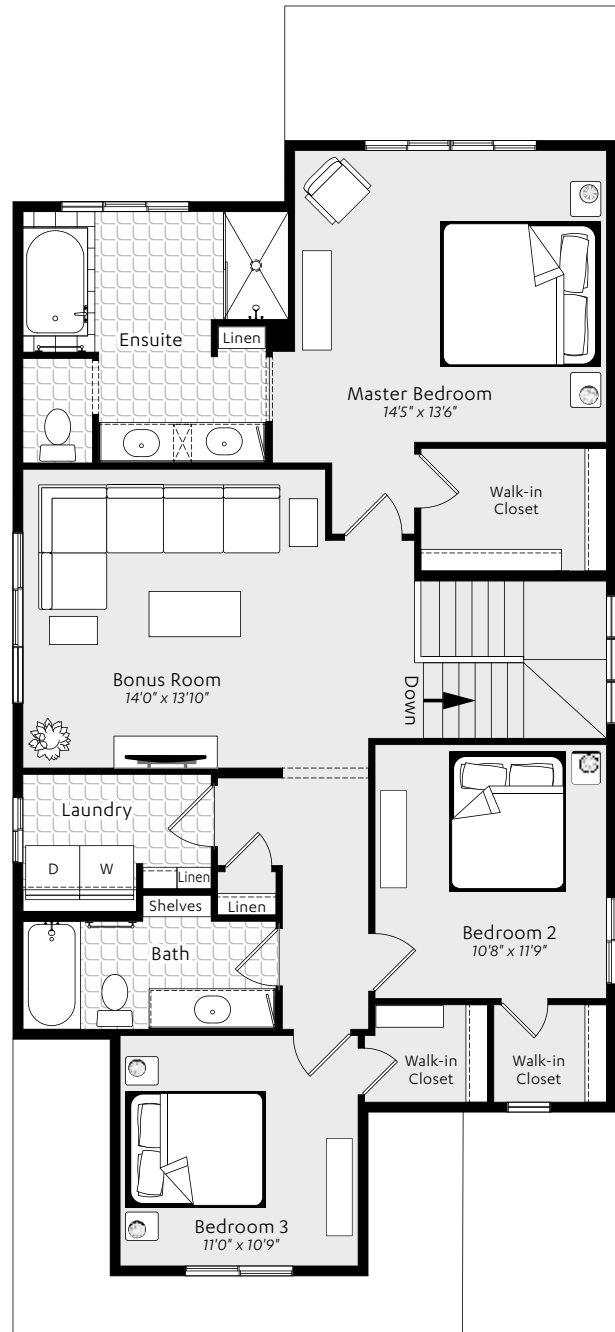


3 Bedrooms | 2½ Baths | Two Storey
2354 sq. ft. finished + 696 sq. ft. unfinished basement

Main Floor | 1053 sq. ft.



Second Floor | 1301 sq. ft.



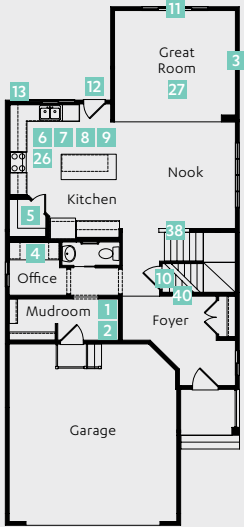
excelhomes.ca

Over 50 Awards for Design Excellence

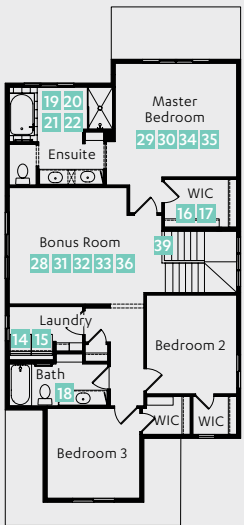


OPTION LOCATION OVERVIEW

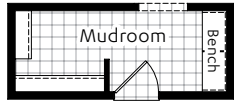
Main Floor



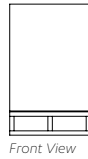
Second Floor



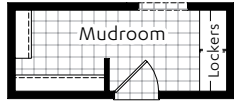
- 1** Mudroom with Bench:
- Bench is 5' in length



#21210



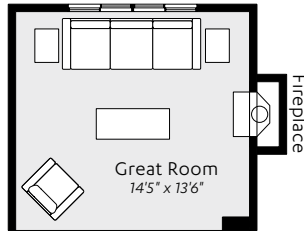
- 2** Mudroom with Lockers:
- Total length is 5' with 2 lockers, 3 hooks per cubby



#21310



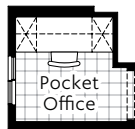
- 3** Great Room Fireplace Location:
- Choice of fireplace finishing options available; see your sales representative for details



Fireplace

Great Room
14'5" x 13'6"

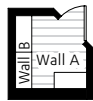
- 4** Desktop Upgrade Level 2:
(NOTE: Desktop Upgrade Level 1 is included in this plan)
- Laminate top with bank of drawers plus upper cabinets with open book shelf
- 2 1/4" hole in desktop for cords



#21513

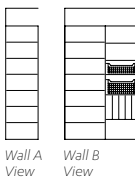


- 5** Pantry Upgrade:
- White melamine shelves
- Small and medium pull-out wire baskets
- Tray dividers

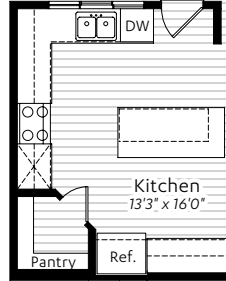


#14710

NOTE: Actual final built-in may vary from drawing based on site conditions.

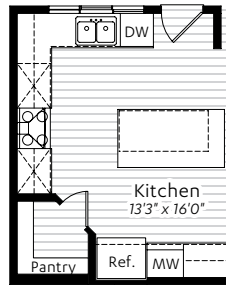


- 6** Kitchen Upgrade Level 1:
- Cabinet upgrade to max 42" upper cabinets with step up above microwave and fridge
- One set of pots and pans drawers beside stove



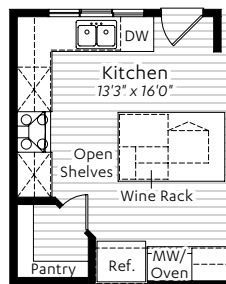
#14003

- 7** Kitchen Upgrade Level 2:
- Island increased from standard 6'6" x 3'0" to 6'6" x 3'6"
- Cabinet upgrade to max 42" upper cabinets with finished height consistent throughout kitchen
- Chimney-style hoodfan included with full height tile behind
- Two sets of pots and pans drawers beside stove
- Built-in microwave included with trim kit



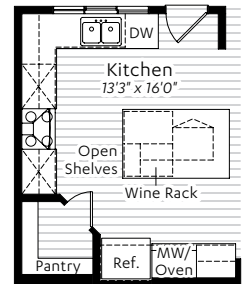
#14004

- 8** Kitchen Upgrade Level 3:
- Island increased from standard 6'6" x 3'0" to 6'6" x 4'0" (includes wine rack, open shelves and extra storage)
- Cabinet upgrade to max 42" upper cabinets with crown moulding extended to ceiling throughout kitchen
- Chimney-style hoodfan included with full height tile behind
- Three sets of pots and pans drawers (one to each side of stove and one below the cooktop)
- Built-in microwave and wall oven included with trim kit
- Electric cooktop included with lower base cabinet



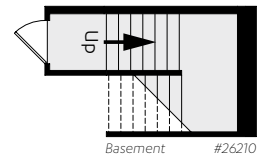
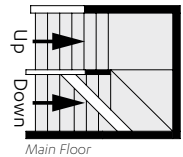
#14008

- 9** Kitchen Upgrade Level 4:
- Island increased from standard 6'6" x 3'0" to 6'6" x 4'0" (includes wine rack, open shelves and extra storage)
- Cabinet upgrade to 36" and 12" stacked cabinets with crown moulding extended to ceiling throughout; upper 12" cabinets include clear glass fronts with lighting
- Chimney-style hoodfan included with full height tile behind
- Three sets of pots and pans drawers (one to each side of stove and one below the cooktop)
- Built-in microwave and wall oven included with trim kit
- Electric cooktop included with lower base cabinet
- Pull-out garbage/recycle drawer
- Tip-out sink tray in front of sink
- Under cabinet lighting over counter areas



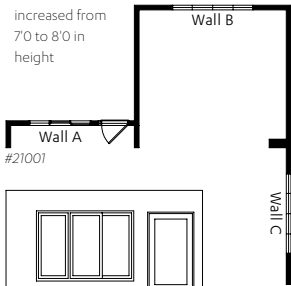
#14012

- 10** Developed Basement Stairwell:
- Door moves from main floor to basement
- Stairwell with finished walls and carpeted stairs

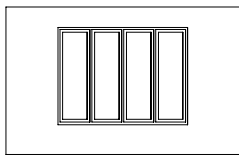


11 9' Main Floor Window Package:

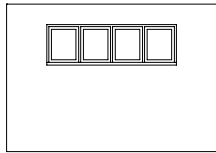
- Rear windows increased up to an additional 12" in height
- Rear windows upgraded to casement windows
- Patio door increased from 7'0 to 8'0 in height



#21001
Wall A View



Wall B View



Wall C View

12 Rear Deck

- Stairs to yard (number of stairs depends on grading)
- Deck materials as selected on "Schedule B"



13

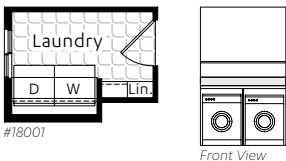
13 Gas Line for BBQ:

- See "Rear Deck" option for placement
- (NOTE: Does not require "Rear Deck" option for purchase and is sold separately)

#986098305

14 Laundry Upgrade Level 1:

- Laminate countertop above washer and dryer with wire shelf above
- 6' tile backsplash above countertop

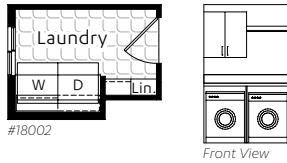


#18001

Front View

15 Laundry Upgrade Level 2:

- Laminate countertop above washer and dryer
- 6' tile backsplash above countertop
- Upper cabinet with wire shelf with hanging rod

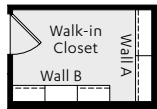


#18002

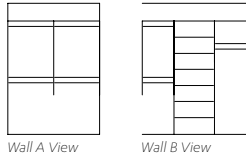
Front View

16 Walk-in Closet Upgrade Level 1:

- Open shelving above closet organizer
- Single hanging area for long clothes
- Tower with white melamine shelves
- Double hanging areas for short clothes



#23111



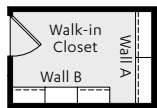
Wall A View

Wall B View

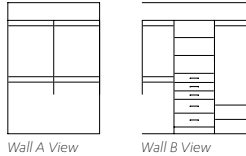
NOTE: Actual final built-in may vary from drawing based on site conditions

17 Walk-in Closet Upgrade Level 2:

- Open shelving above closet organizer
- Single hanging area for long clothes and shoe storage below
- Tower with white melamine shelves, jewelry insert and drawers
- Double hanging areas for short clothes (tie rack and scarf rack included)



#23112

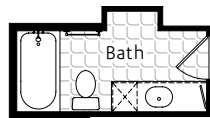


Wall A View

Wall B View

NOTE: Actual final built-in may vary from drawing based on site conditions

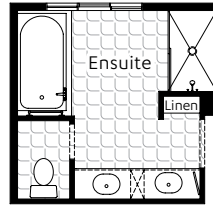
18 Bank of Drawers to Main Bath



#16302

19 Ensuite Upgrade Level 1:

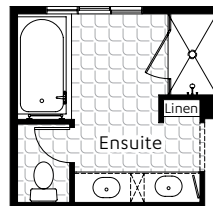
- Tub size increased to 72" x 36"
- Cabinet-style medicine cabinet
- Shower tile surround extended to ceiling



#16002

20 Ensuite Upgrade Level 2:

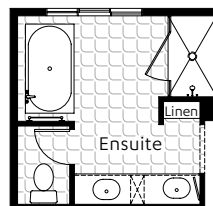
- Tub size increased to 72" x 36"
- Cabinet-style medicine cabinet
- Fully tiled shower with acrylic base and swinging shower door with chrome frame
- Vanities raised to 36"
- Door added to water closet



#16003

21 Ensuite Upgrade Level 3:

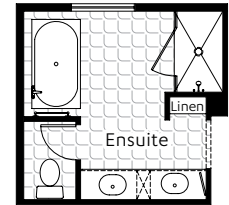
- Tub upgrade to 66" x 36" free-standing soaker
- Cabinet-style medicine cabinet
- Fully tiled shower with acrylic base and swinging shower door with chrome frame
- Vanities raised to 36"
- Door added to water closet
- Tile surround to wall by tub area to match height of vanity backsplash
- Additional light above free-standing tub



#16004

22 Ensuite Upgrade Level 4:

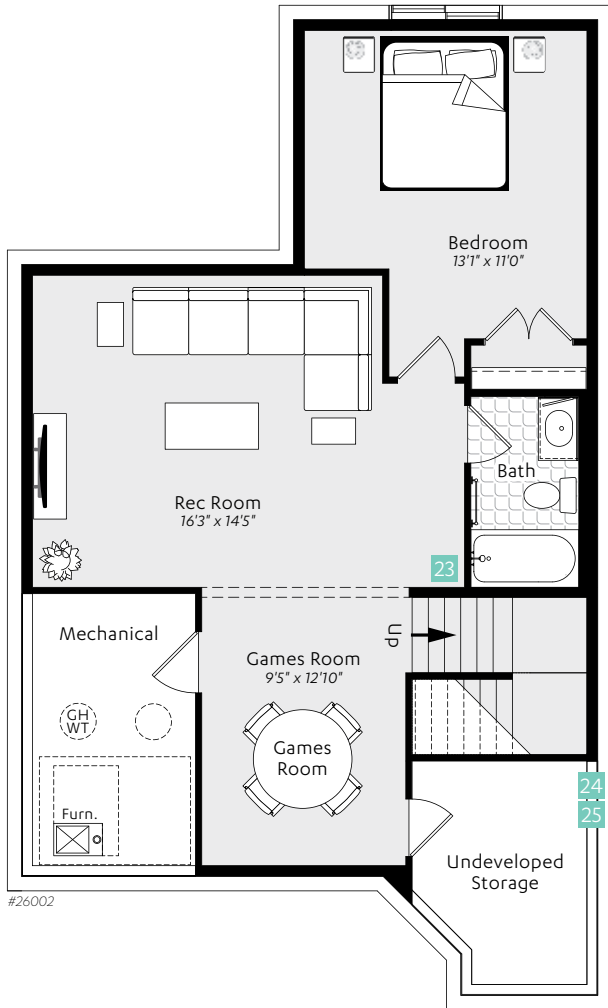
- Tub upgrade to 66" x 36" free-standing soaker
- Cabinet-style medicine cabinet
- Full height tiled shower with tiled base, square drain and swinging shower door with chrome top
- Chrome bath fixtures including rain showerhead, handshower on slide bar and diverter
- Vanities raised to 36"
- Door added to water closet
- Tile surround to wall by tub area to match height of vanity backsplash
- Additional light above free-standing tub



#16005

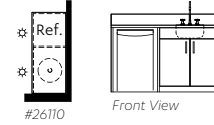
LOWER LEVEL OPTIONS FOR CHARLESTON IN MAHOGANY

Basement Development Option Level 1 696 sq. ft.



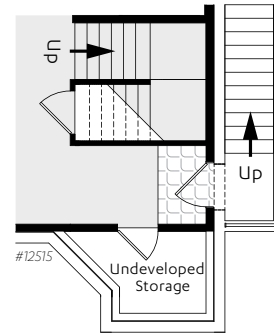
23 Wet Bar in Basement Development Option

- Laminate countertop with lower cabinets
 - Stainless steel mini-fridge included
 - 6" tile backsplash
 - Two 4" mini LED pot lights above
- (NOTE: Pot light locations may vary based on site conditions)



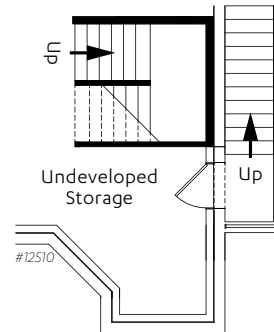
24 Concrete Stairwell in Basement Development Option:

- 6-panel entry door
 - Tile at stairwell entrance
 - Exterior light and plug
 - Aluminum railing with handrail to top
 - Floor drain
 - Allowance for 12 risers
- (NOTE: Actual number of risers required will be determined on site conditions)



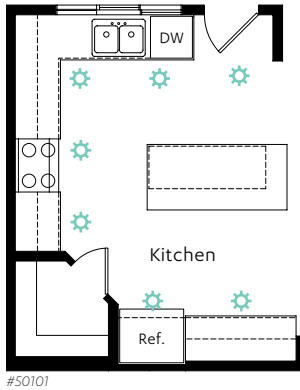
25 Concrete Stairwell in Undeveloped Basement:

- 6-panel entry door
 - Exterior light and plug
 - Aluminum railing with handrail to top
 - Floor drain
 - Allowance for 12 risers
- (NOTE: Actual number of risers required will be determined on site conditions)



CEILING OPTIONS FOR CHARLESTON IN MAHOGANY

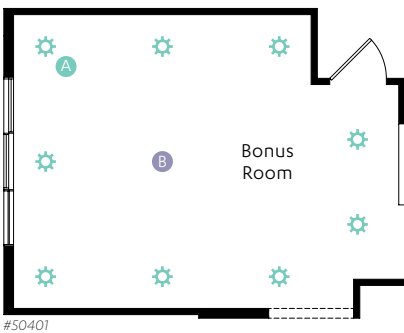
26 Pot Light Kitchen Layout*:
- 6' LED pot lights including dimmer switch



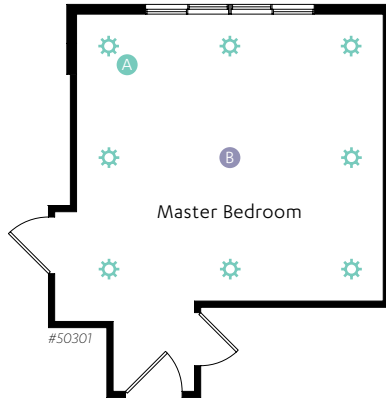
27 Pot Light Great Room Layout*:
- 6' LED pot lights including dimmer switch



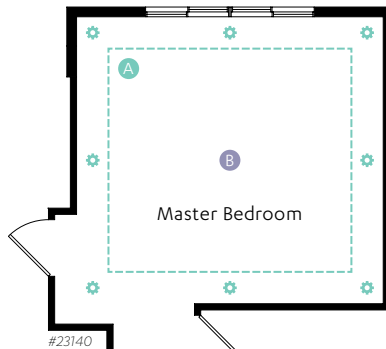
28 Pot Light **A** Bonus Room Layout:
- 6' LED pot lights including dimmer switch
Check Option Below if on "Schedule B":
 Ceiling Fan Rough-in Location **B**
#974098205



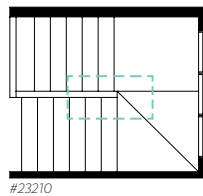
29 Pot Light **A** Master Bedroom Layout:
- 6' LED pot lights including dimmer switch
- Includes standard centre light fixture
Check Option Below if on "Schedule B":
 Ceiling Fan Rough-in Location **B**
#974098205



30 Tray Ceiling with Pot Lights **A**
Master Bedroom Layout:
- 4' mini LED pot lights including dimmer switch
- Includes standard centre light fixture
Check Option Below if on "Schedule B":
 Ceiling Fan Rough-in Location **B**
#974098205

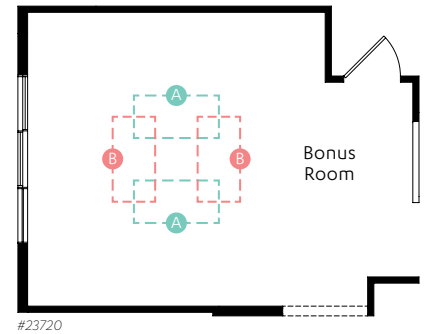


31 Skylight Above Second Floor Stairwell for **Elevation A and B**:
- 2' x 4' skylight with flared opening



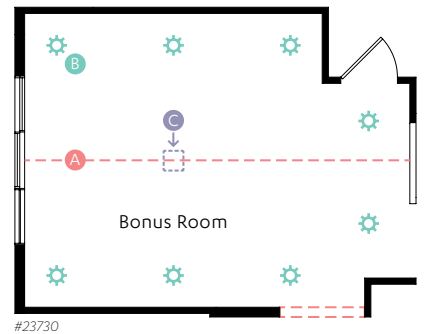
32 Skylights Above Bonus Room:
- 2' x 4' skylights with flared openings

Choose **Elevation A and B** **A**
One **Elevation C** **B**
Option: **Elevation C** **B**



33 Vaulted Ceiling **A** Bonus Room Layout for **Elevation A and B**:
- 6' pot lights including dimmer switch

Check Option Below if on "Schedule B":
Options: Pot Lights **B** #50401
 Ceiling Fan Rough-in with Box Fixture **C** #974098205



*Actual number of pot lights and locations may vary based on site conditions.

CEILING OPTIONS FOR CHARLESTON IN MAHOGANY

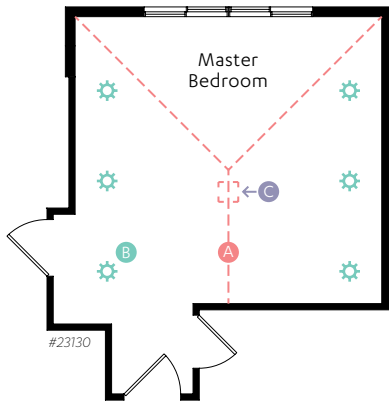
34 Vaulted Ceiling **A** Master Bedroom

Layout for **Elevation A:**

- 6" LED pot lights including dimmer switch
- Includes standard centre light fixture

Check Option Below if on "Schedule B":

- Pot Lights **B** #50301
- Ceiling Fan Rough-in Location **C** #974098205



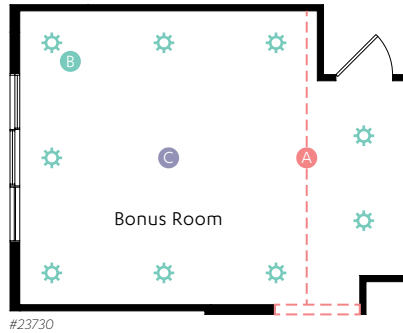
36 Vaulted Ceiling **A** Bonus Room Layout for

Elevation C:

- 6" pot lights including dimmer switch

Check Option Below if on "Schedule B":

- Options: Pot Lights **B** #50401
 Ceiling Fan Rough-in Location **C** #974098205



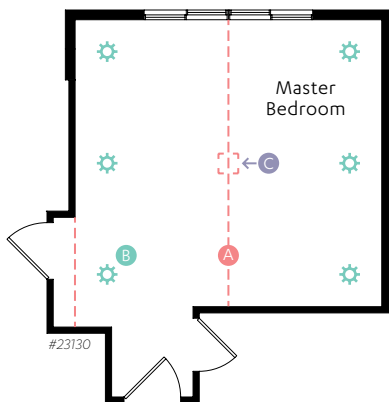
35 Vaulted Ceiling **A** Master Bedroom

Layout for **Elevation B and C:**

- 6" LED pot lights including dimmer switch
- Includes standard centre light fixture

Check Option Below if on "Schedule B":

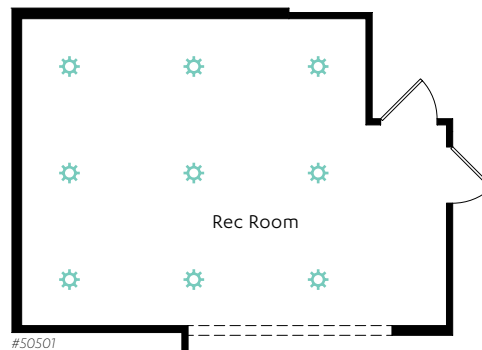
- Pot Lights **B** #50301
- Ceiling Fan Rough-in Location **C** #974098205



37 Pot Light Basement Development

Option Layout*:

- 6" LED pot lights including dimmer switch



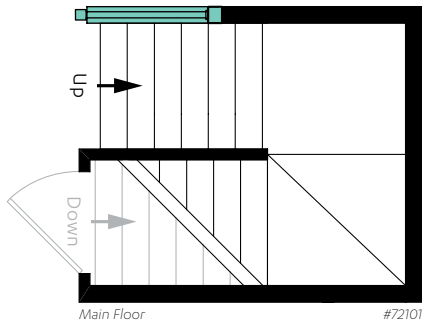
*Actual number of pot lights and locations may vary based on site conditions.

This floorplan represents one version of this home and measurements are approximate. The square footage, measurements and layout may vary based on the elevation and/or lot. All elevations shown are artist's concept only and will vary by community. The builder reserves the right to make modifications or substitutions should they be necessary. All plans, options, dimensions, specifications, materials and drawings are subject to change without notice. E.&O.E. ©2015 Excel Homes LP.

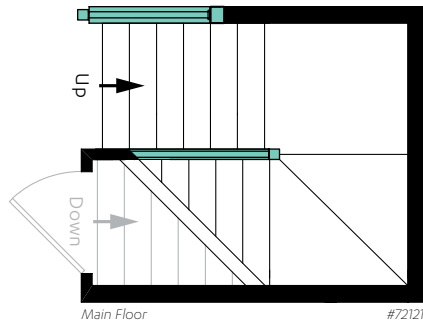
All plans, options and drawings are copyright of Excel Homes LP and cannot be reproduced, in whole or in part, in any manner, without the prior written consent of Excel Homes.

RAILING OPTIONS FOR CHARLESTON IN MAHOGANY

38 Railing Upgrade Level 1:
 - Railing added on main floor leading up to landing



39 Railing Upgrade Level 2:
 - Railing added on main floor leading up to landing and from landing up to second floor



40 Railing in Basement:
 - Railing added to main floor leading down to landing
 (NOTE: This option also requires the purchase of a basement development option or developed basement stairwell option)

